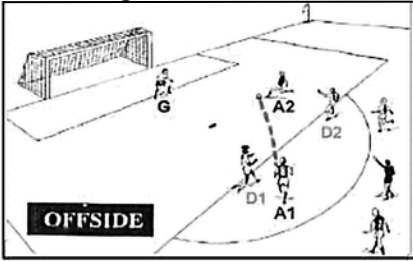


APPENDIX D: OFFSIDE DIAGRAMS

Offside Diagram 1

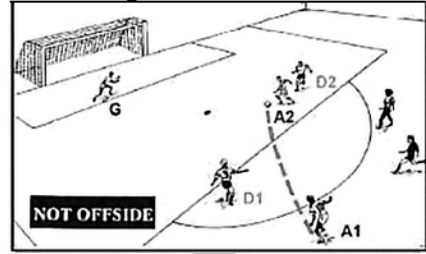


Pass to a Teammate

A1 passes the ball to teammate A2.

A2 is offside because of being ahead of D1 and is nearer to the opponent's Goal Line than at least two opponents at the moment the ball was played by A1.

Offside Diagram 2

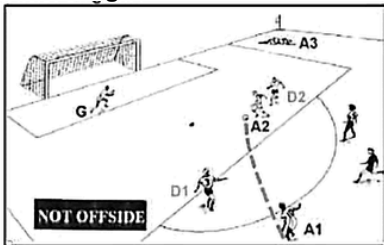


Pass to a Teammate

A1 plays the ball forward to teammate A2 who is even with the second to last defender D2.

A2 is not offside since, at the moment A1 played the ball, A2 was not nearer to the opponent's Goal Line than at least two opponents, i.e. D2 and the goalkeeper.

Offside Diagram 3



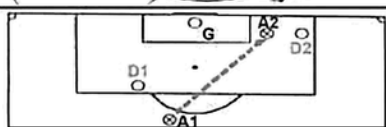
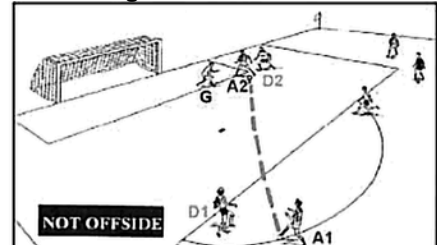
Pass to a Teammate

A1 plays the ball forward to teammate A2, who is even with the second to last defender.

A2 is not offside since, at the moment A1 played the ball, A2 was not nearer the opponent's Goal Line than at least two opponents.

Teammate A3, lying injured outside the Penalty Area, is in an offside position but would not be penalized, since A3 is not involved in active play.

Offside Diagram 4



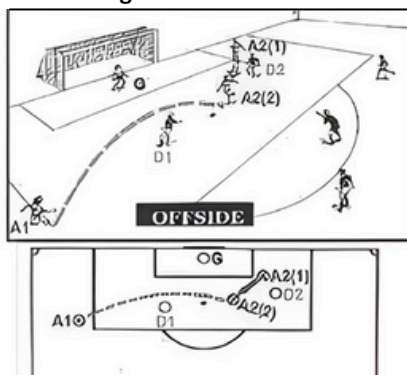
Pass to a Teammate

A1 plays the ball to teammate A2, who is even with the last two defenders, i.e. D2 and the goalkeeper.

A2 is not offside since, at the moment A1 played the ball, A2 was not nearer the opponent's Goal Line than at least two opponents.

APPENDIX D: OFFSIDE DIAGRAMS

Offside Diagram 5



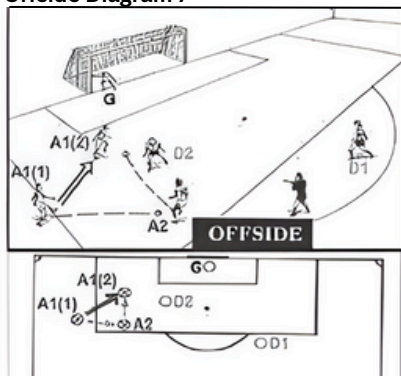
Pass to a Teammate

A1 crosses the ball forward from outside the Penalty Area.

A2 runs from position (1) and collects the ball as it lands at position (2).

A2 is offside since, at the moment A1 played the ball, A2 was nearer to the defender's Goal Line than at least two opponents and gained an advantage by being in active play.

Offside Diagram 7



Pass to a Teammate

A1 plays the ball to teammate A2 from position (1) and runs forward to receive the return pass. A2 then plays the ball to A1 who is now in position (2).

A1 is offside since at the moment the ball was played forward to A1 by A2, A1 was nearer the opponent's goal than at least two of the opponents and gained an advantage by being in active play.

Offside Diagram 6

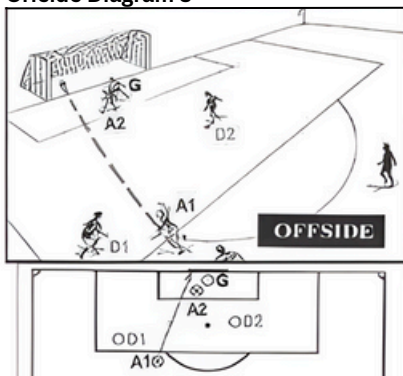


Pass to a Teammate

A1 passes the ball to teammate A2 who runs from position (1) to position (2) to play it.

A2 is not offside because at the moment A1 played the ball, A2 was not in an offside position, since A2 was not in front of the ball and was not nearer to the opponents' Goal Line than at least two opponents.

Offside Diagram 8



Interfering with an Opponent

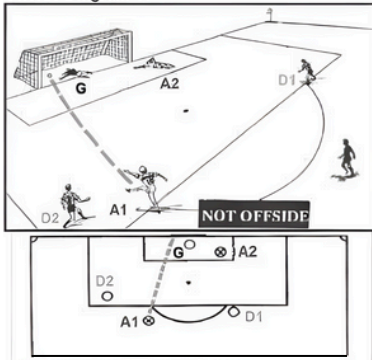
A1 shoots for goal and the ball enters the net.

Teammate A2 is standing in front of the goalkeeper.

The goal would not be allowed since A2, who is in an offside position, is involved in active play and is interfering with an opponent, i.e. the goalkeeper.

APPENDIX D: OFFSIDE DIAGRAMS

Offside Diagram 13



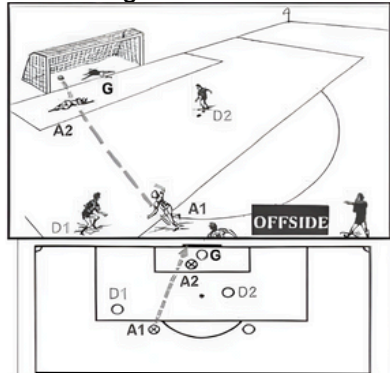
Not Interfering with an Opponent

A1 shoots for goal and scores.

Although teammate A2 is lying injured in an offside position, A2 is not involved in active play.

The goal would be allowed.

Offside Diagram 14

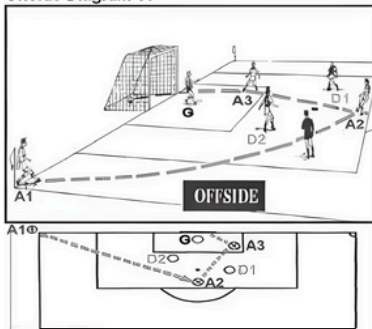


Interfering with an Opponent

A1 shoots for goal and the ball enters the goal.

Teammate A2, who is lying injured in the Goal Area and in the path of the ball, would be penalized for offside. A2's presence, however accidental, causes A2 to be involved in the active play because of interference with an opponent.

Offside Diagram 15

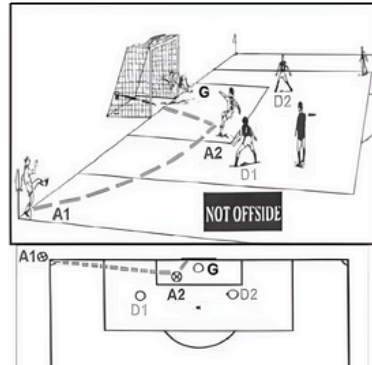


Corner Kick

A1 takes a corner kick and the ball goes to teammate A2.

A2 shoots for goal and the ball is touched by teammate A3 and enters the goal. The goal is not allowed, since A3 was in front of the ball and there were not at least two opponents between A3 and the Goal Line when it was last played by teammate A2. Player A3 did not receive the ball directly from A1, the corner kicker.

Offside Diagram 16



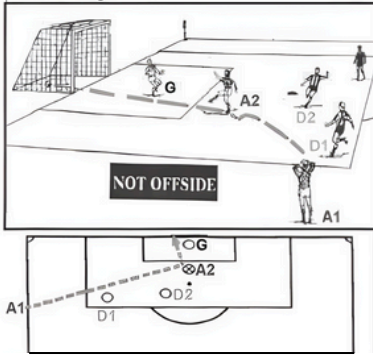
Corner Kick

A1 takes a corner kick and the ball goes to teammate A2, who shoots for goal and scores.

Although A2 has only one opponent closer to the Goal Line, the goal is allowed since a player cannot be offside if the ball is received directly from a corner kick.

APPENDIX D: OFFSIDE DIAGRAMS

Offside Diagram 17

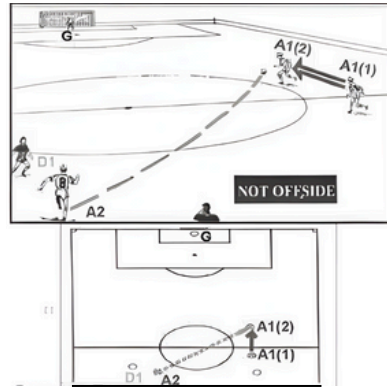


Throw-in

A1 throws the ball to teammate A2 who shoots and scores. The goal is allowed.

Although A2 is in front of the ball and there is only one opponent between A2 and the Goal Line, A2 is not offside because a player cannot be offside if receiving the ball direct from a throw-in.

Offside Diagram 18



Interfering with an Opponent

A2 plays the ball ahead of A1, who runs from position (1) in A1's own half of the field to position (2) in opponent's half of the field.

Although there are not at least two opponents nearer their own Goal Line at the moment when A2 played the ball, A1 is not offside since a player cannot be in an offside position when in their own half of the field-of-play.