



Regatta Guide

The Windermere Cup

3 May 2025

Welcome to the **Windermere Cup**! The University of Washington and Windermere Real Estate are excited to host the 39th annual Windermere Cup races.

The races are held as part of the celebration of Seattle's Opening Day of Boating Season and are followed by the Seattle Yacht Club's Opening Day Boat Parade. More than 800 rowers compete in this prestigious event, which culminates with the women's and men's Windermere Cup races. This year, UW welcomes the New Zealand National team and the teams from Indiana University to compete.

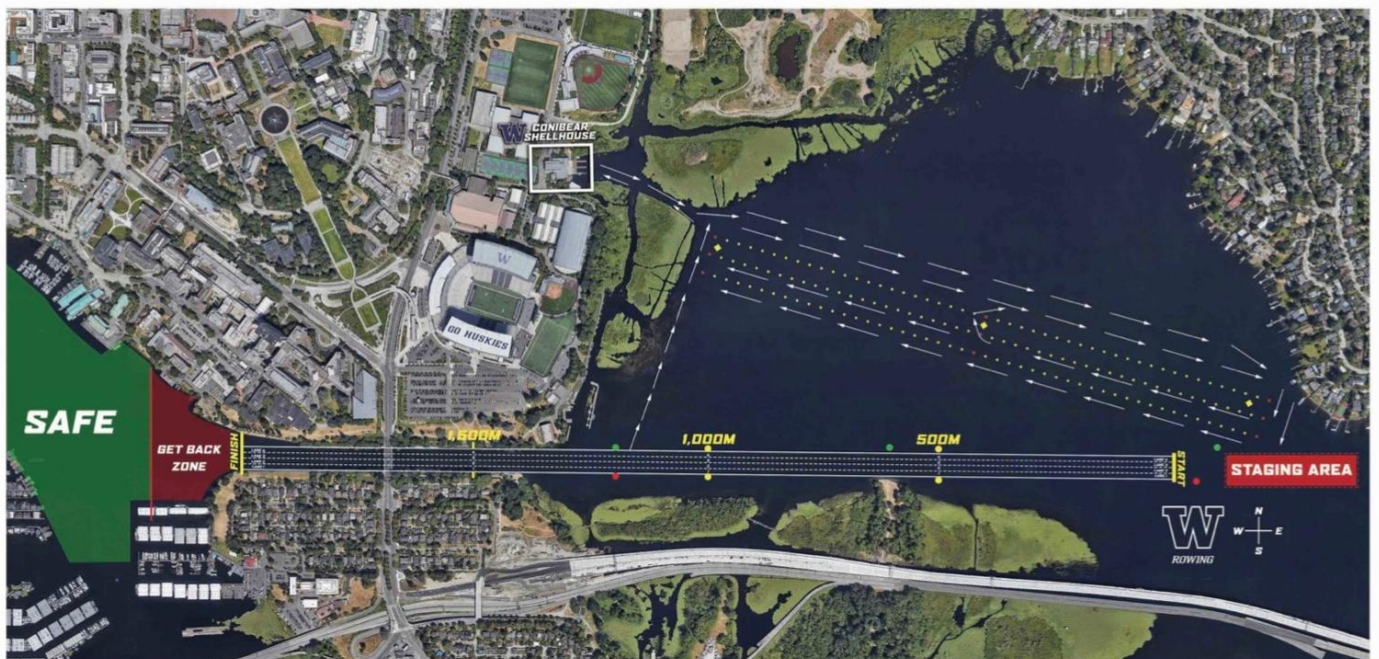
Following the races, fans are invited to join the regatta champions for an awards ceremony and presentation of the Windermere Cup Trophy at the video board near the finish line.

Admission to the event is free. Viewing is available on the shores of the Montlake Cut, or by boats anchored to a log boom in Lake Washington.

More information about this year's race and its history can be found [here](#).

WHAT TYPE OF RACE IS THIS?

Hosted by Windermere and the University of Washington, the Windermere Cup is a 2000m sprint race and entrants are by invitation only. Unlike the fall head races where shells do a staggered start and navigate a course with turns to beat the clock, sprint races have all the boats for each event line up and race at the same time—the first one to cross the finish line wins.



WHAT IS THE COURSE?

The Montlake Cut has been the Huskies' home course since 1960 and is considered one of the most iconic in collegiate rowing.

The course begins in Lake Washington from a starting platform located parallel to the 520 Bridge near Webster Point in Lake Washington and runs east to west through the Montlake Cut and to the finish line near the mouth of Portage Bay in Lake Union.



To line up, the coxes will negotiate their boats to a starting platform* where a race volunteer holds the stern of the boat and the race begins immediately once the head referee calls out all the boats' names. There are four lanes, lane 1 is on the south side and lane 4 is on the north. (*Starting platforms may not be used this year).

If you have six minutes and would like to get an idea of what goes on in the boat from a coxswain's perspective, watch this cox recording of Victoria City's [Champion Race Mens Jr 8+ 2019](#).

WHO IS PARTICIPATING AND WHEN DO THEY RACE?

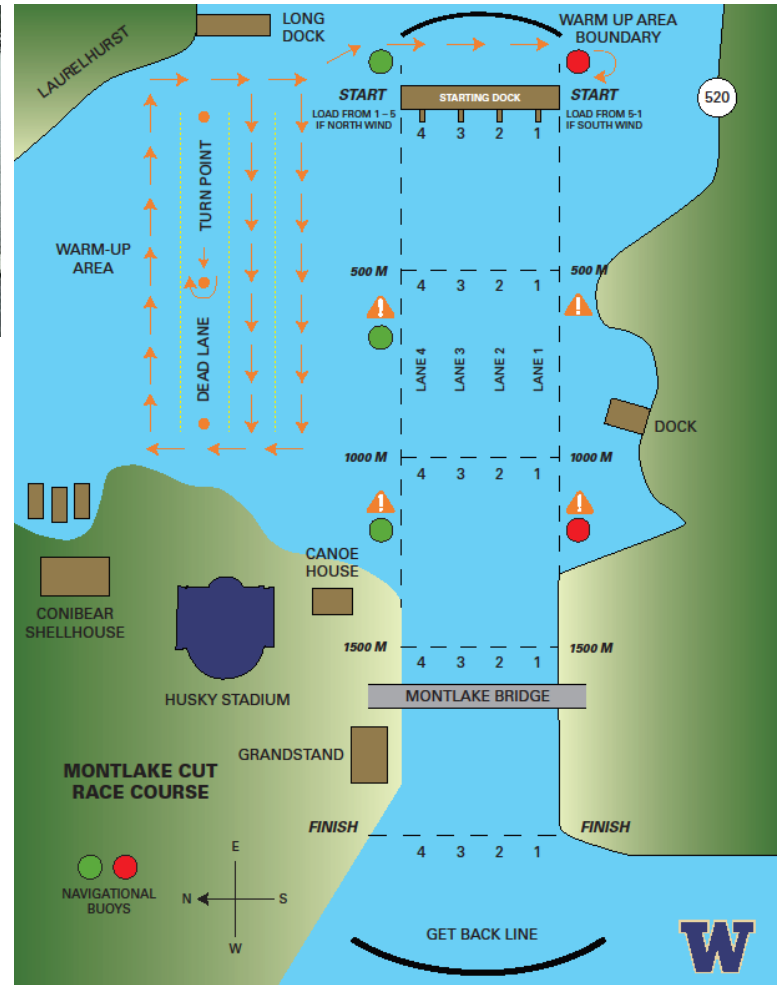
We will have one boat racing this weekend in the **Womens Jr 8+ Elenor McElvaine Cup**. Race times are scheduled for **10:44 am**. Double-check race time on the day of in case race organizers change the order of events and times. Lane assignments will not be issued until later in the week.

Please note that although the girls' race should be finished by about 10:52, they will have to bob around at the end of the finish line until all the races are completed before they can go back through the cut to the boat house. The last race should be done by about 11:52. The parade of boats back through the cut happens at about noon.

Coaches will inform their respective athletes directly when they are expected at the racecourse, how they are getting there, and what to expect for the day.

HOW CAN I WATCH?

Although you will not be able to see the whole race, this regatta wins points for its venue and viewing opportunities along the Montlake Cut and is an exciting race to watch due to the number of boats participating and because it is also a Collegiate race. Best views of the race are from the University or Montlake Bridges, along the Montlake Cut, and the shores of the Washington Arboretum. In the past there has been a JUMBOTRON located near the finish line so that you



can see aerial views of the entire race but it is unclear if they will have any drone or live streaming this year. In the past, they usually only live stream the college races.



Viewing is best along the Montlake Cut where crews will be racing just a few feet away. Lane 1 is closest to the south side of the Cut and Lane 4 is on the north side of the Cut.

Here are a few other areas that also provide great viewing:

- **Finish Line.** The finish line is located on the northwest side of the Montlake Cut behind the UW Medical Center. It can be accessed through the walkway along the Cut.
- **Montlake Bridge.** It will be packed, but viewing from atop the Montlake Bridge provides views eastbound to the start and westbound to the finish. Spectators need to be especially aware of traffic on this busy thoroughfare. **The bridge will be closed to traffic from about 9:20 am to 3pm.** There are stairs down to the Cut on both ends of the bridge: stairs on the east side (on the south end of the bridge) and on the west side (at the north end).
- **Canoe House/A.S.U.W. Shellhouse.** Located on the northeast of the Cut, this is the old Navy hangar that served as the UW shellhouse from 1920 to 1949. The 1923 IRA champions, the '36 guys, the '48 guys – all called this home.



[Photography tip: if you want a picture of rower faces *during* the race or to see the last 250 m of the race, watch from the westbound side of the bridge; however, if you want to watch the first 1500 meters of the race as they enter and race through the Cut to the bridge, position yourself on the east bound side).

In addition, the south side of the Cut has a walkway that runs 500 meters to the finish. Lane 1 is nearest to this side, and the finish line flag is here as well. The downside is room is limited, as the Cut in some places is fairly steep and, as opposed to the north side which is UW property, the south side abuts private property (which is fairly well marked). Towards the finish line it opens up more, and the sloping grass provides excellent viewing points.

HOW CAN I EXPERIENCE THIS WITH MY KID?

As with previous regattas, you will have little to no contact with them while they are there—rowers will not have their phones on them in the boat. Boats typically launch about 30-45 minutes before their posted race time and on Herenow you can see when races are underway. Otherwise, you might be able to find them near the boat trailer when they are rigging and derigging the boat. Wear your team colors and head to the Cut and meet up with other parents to enjoy watching the races in solidarity.

The team will likely launch from the Conibear Shellhouse and be based near the Northshore School District boat trailer which will be in parking lot E-18.

WHO WON?!?

Real time results are posted on [Herenow.com](https://www.herenow.com). Unlike the fall head races, these are sprints so everyone in a heat will start at the same time and race each other across the finish line very much like a track sprint. Award ceremonies will take place following the conclusion of Windermere Cup races **AT THE FINISH LINE** (i.e., not at the Shellhouse) on the north side of the Cut, for the Windermere and Cascade Cups. The award ceremony for Masters, Collegiate, and Junior's races will take place on the same stage at 1:30 p.m. PT. Only first place finishers receive medals.

WHERE ARE THE TOILETS AND CAN I BUY FOOD OR MERCHANDISE?

The Windermere Cup is a massive event. There will be portable toilets at multiple locations as well as food and drink vendors on the north side of the Montlake Cut, west of the Montlake Bridge.

Merchandise--Windermere Cup gear and commemorative items will be for sale on the north side of the Montlake Cut, west of the Montlake Bridge. Visit the Windermere Cup merchandise booth on Friday, May 3th at Party on the Cut and on Saturday, May 4th near the Awards Stage on the Northwest end of the Montlake Cut to design your own garment. Items can also be purchase [online](#).



WHERE DO I PARK?

For cars parking in E-18, access is readily available from the NORTH entrance since they will often close the South entrance. **All parking is cashless.** You can pay at the pay station by the outdoor track or download the app Pay By Phone.

Fans can pay for parking via the **Pay-By-Phone App** or with a credit card at the pay station kiosk located near the Husky Track (E18 parking lot) and Husky Stadium (E12/19 parking lot). Cash will not be accepted. Click here to learn more about parking at the University of Washington.

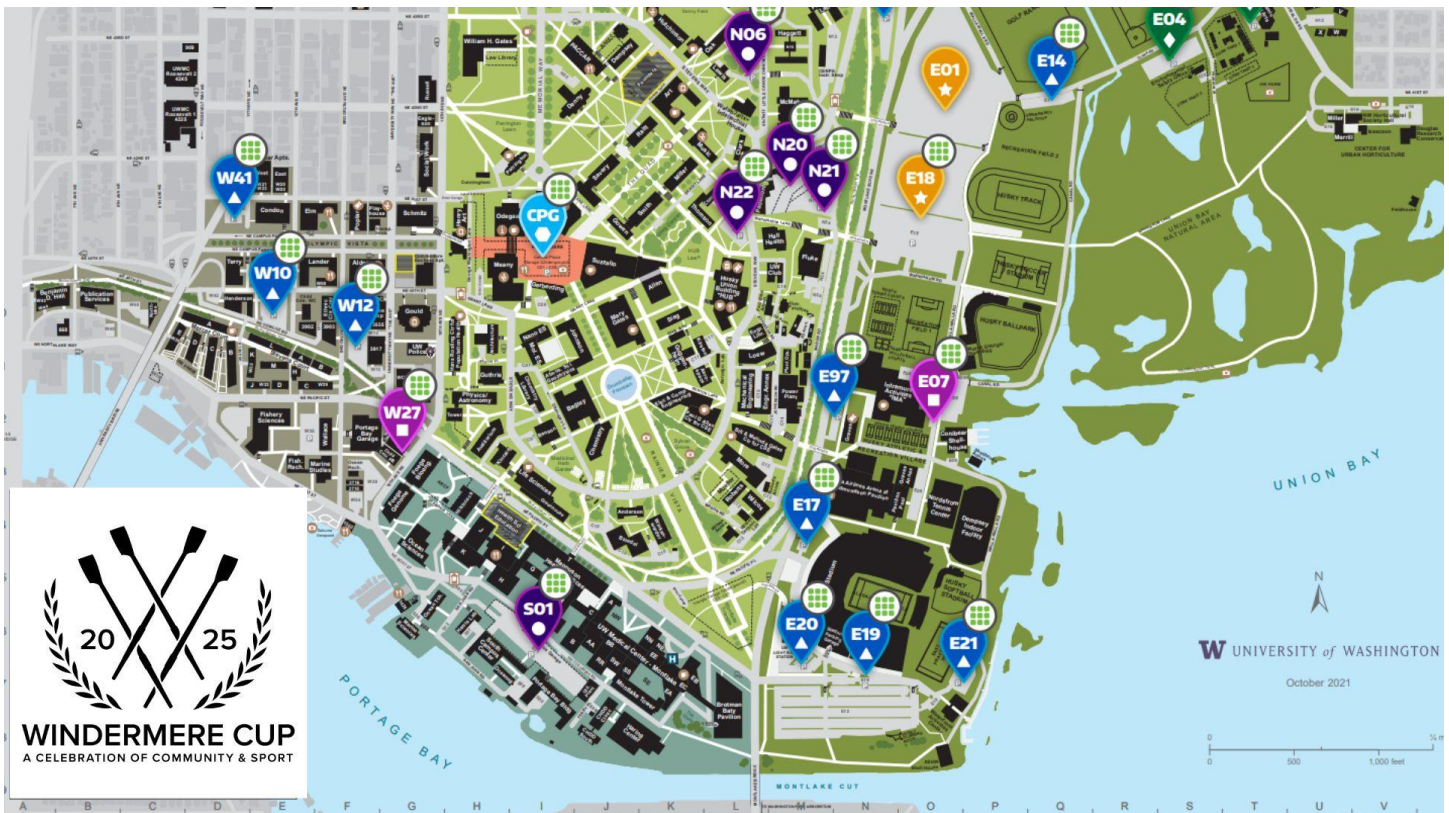
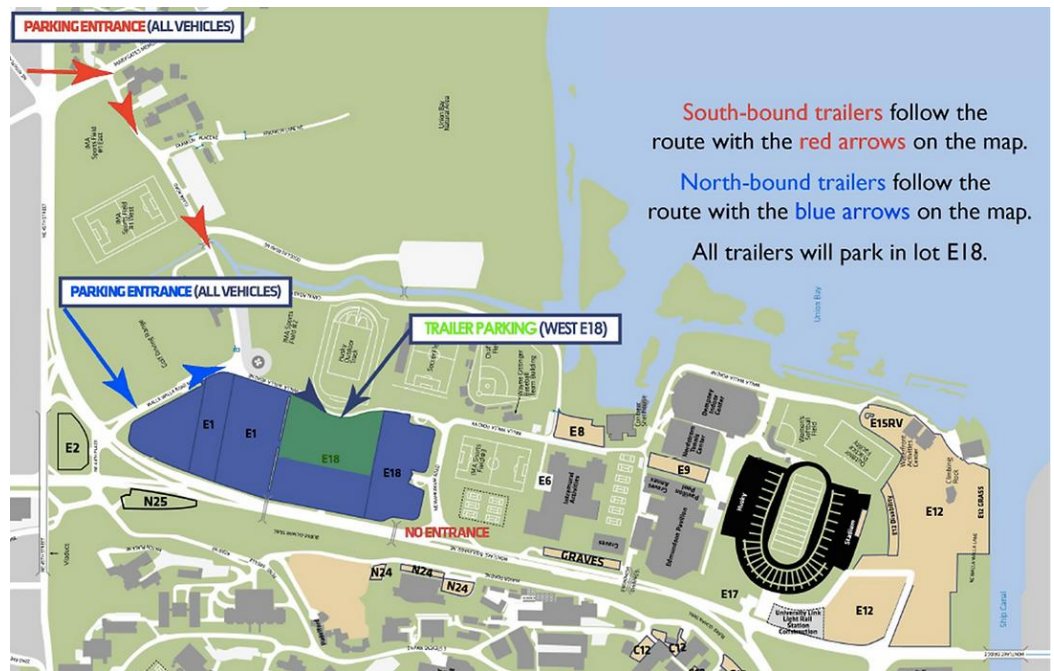
E-18 Only, Begins Friday, May 3rd
Single Day – \$12.00
Two Days – \$24.00

Day of Event Public Parking:

E01/E18	\$20.25	Public Parking
E12/E19	\$20.25	Public and Disability Parking

No public parking in TG/IMA, E8, E9, E6

Please Note: The Montlake Bridge will be closed to traffic from 9:20 a.m. to 3:00 p.m. on Saturday, May 4th. Be mindful of lot signage, if a lot is “permit only” you may be ticketed if you park in it without purchasing an event permit from TS Event Staff in the lots.



WHEN SHOULD I ARRIVE AND WHAT DO I BRING?

Wear good walking shoes! The E18 parking lot is approximately 0.7 miles to the Montlake Cut. Parents will appreciate binoculars if they have them. It's not uncommon for spectators to bring cowbells so don't be shy! Do not bring chairs unless you are planning on sitting at the finish line, it will be standing room only everywhere else. Parking will be full, so **we highly recommend arriving before 9am.**

Rowers should dress for the weather, eat a nutritious light breakfast, boosters will provide a light post-race snack. Have them contact coaches or captains for any questions.

COMMUNICATION TO COACHES AND CREWS

- If the racecourse or race events are altered, delayed, or cancelled, it will be announced via Herenow (<https://herenow.com>) or via Regatta Central (https://www.regattacentral.com/regatta/?job_id=9537&org_id=0)
- Normal messages such as Racing Underway, Event Name and Number at start line, etc will also be broadcast via [Herenow.com](https://herenow.com). Note that you won't see the Windermere results on the Herenow.com website until race day.
- You can also follow via [Facebook](#), [Instagram](#) and on Twitter at [@UW Rowing](#) and [@WindermereCup](#).

HOW CAN I HELP?

Come on out to the Montlake Cut and cheer for all the boats! If you have any questions, please do not hesitate to contact: inglemoorbc@gmail.com.

Donations of your time, funding, or material goods are always appreciated! Inglemoor Crew Boosters is a 501(c) 3 organization, and your donation is tax deductible. Several companies such as Boeing and Microsoft will also match your hours or cash donation! Our PayPal link is https://www.paypal.com/cgi-bin/webscr?cmd=_s-xclick&hosted_button_id=QYFFPQTMD56RJ



Please consider signing up to help out with the fundraiser on May 10th at the Hangar in Kenmore and at Regionals May 16-18th.

Also, Boosters is pleased to announce that we are now selling raffle tickets for you to win your very own Concept2 Erg!

Raffle tickets are \$20 each and will be on sale at all the next regattas and at the Row-a-thon on May 10th or until we sell out. The lottery will be held May 18th at Regionals (attendance is not necessary to participate). Please buy one (or more!). Sales are limited to 250 tickets.

YES! If you already own an erg, you can may donate it back to the program!

HOW ELSE CAN I STAY INFORMED?

We now have a website! <https://www.inglemoorcrew.com/welcome> Here you can find our Regatta Notes, learn more about the sport of rowing, and contribute towards our Booster support for every rower.

Thank you for all your support, Go Team!

Order of Events

Note: For updates and last minute changes be sure to check the [news](#) and [heat-sheet/draw](#) pages.

Event#	Time*	Event
1	10:15 AM	Mens Masters 8+ 30+
2	10:17 AM	Mens Masters 8+ 40+
3	10:19 AM	Mens Masters 8+ 50+
4	10:21 AM	Mens Masters 8+ 60+
5	10:23 AM	Womens Masters 8+ 30+
6	10:25 AM	Womens Masters 8+ 40+
7	10:27 AM	Womens Masters 8+ 50+
8	10:29 AM	Womens Masters 8+ 60+
9	10:32 AM	Mens Jr 4x+ George Corkery Jr Cup
10	10:35 AM	Womens Jr 4x+ Dewitt Whitman Cup
11	10:38 AM	Womens Jr 4+ Colin Sykes Cup
12	10:41 AM	Mens Jr 4+ Sara Nevin Cup
13	10:44 AM	Womens Jr 8+ Eleanor McElvaine Cup

Event#	Time*	Event
14	10:47 AM	Mens Jr 8+ Fred Honebein Cup
15	10:50 AM	Mens Open 4+
16	10:52 AM	Womens Collegiate 4V8+
17	10:54 AM	Womens Collegiate Open 8+
18	10:56 AM	Womens Collegiate 3rd Varsity 8+
19	10:58 AM	Womens Collegiate 2V4+
20	11:00 AM	Womens Collegiate Varsity 4+
21	11:05 AM	Mens Collegiate Freshman/3rd Varsity 8+
22	11:10 AM	Men's Cascade Cup 8+
23	11:20 AM	Womens Cascade Cup 8+
24	11:30 AM	Mens Windermere Cup 8+
25	11:45 AM	Womens Windermere Cup 8+

Event times (if listed) are typically for the finals. The schedule is tentative and subject to change