

ALBERTA NETBALL ASSOCIATION

*presents*



# TOURNAMENT



**GUIDE**



LET'S PLAY SOME NETBALL



# WELCOME

On behalf Netball Alberta, it is my great pleasure to welcome each and every one of you to our Stampede Showdown Tournament! We are thrilled to have the opportunity to celebrate Netball Alberta's 50<sup>th</sup> Anniversary year by bringing together players, both new, past and present, coaches, umpires, volunteers and supporters to participate in what I think promises to be an excellent display of the sport we all love!

I would like to thank all our Netball Alberta players and volunteers, not only this year, but for the last 50 years, for their tremendous hard work, commitment and passion for the growth of netball in Alberta and for developing such a sense of community, some amazing opportunities for players and a sense of belonging to something very special.



**LUCY PARK**  
ANA President

*Can't wait to see this all culminate in a great exhibition and celebration of netball in Calgary over the coming weekend! Yeehaw!!*



The University of Calgary, located in the heart of Southern Alberta, both acknowledges and pays tribute to the traditional territories of the peoples of Treaty 7, which include the Blackfoot Confederacy (comprised of the Siksika, the Piikani, and the Kainai First Nations), the Tsuut'ina First Nation, and the Stoney Nakoda (including Chiniki, Bearspaw, and Goodstoney First Nations). The City of Calgary is also home to the Métis Nation of Alberta (Districts 5 and 6).

The University of Calgary is situated on land Northwest of where the Bow River meets the Elbow River, a site traditionally known as Moh'kins'tsis to the Blackfoot, Wîchîspa to the Stoney Nakoda, and Guts'ists'i to the Tsuut'ina. On this land and in this place we strive to learn together, walk together, and grow together "in a good way."

Stampede Showdown

# SPONSORS

## GYM SPONSOR

**Tridyne**  
PROJECTS



## BRONZE & TOURNAMENT MVP

**Downunder** TRAVEL



## DRINK SPONSORS

**ARCTIC CHILLER**  
CUSTOM LABEL BOTTLED WATER

**VEGA**™

## PRIZES

**South  
Island**  
— PIE CO. —

**RECCIN**  
TECHNICAL SERVICES LTD.



# DETAILS

The Stampede Netball Tournament will take place over two days at the **Jack Simpson Gym** at the **University of Calgary**. Built in the leadup to the 1988 Olympic Winter Games, the gym is home to the Dinos basketball and volleyball teams.



## WHEN



July 5 & 6, 2025

## WHERE



2500 University Drive NW  
Calgary, AB T2N 1N4 (see map next page)

## PARKING



The easiest way to access the Jack Simpson Gym is to approach the University from the north side via 32 Ave NW, turning south onto Collegiate Blvd. From there, turn right to park in Lot 10, or turn left to park in Lot 11. Both have daily flat rates that can be paid via app or machine. It is a short walk to enter the building via the Olympic Oval north entrance. Walk down the path toward the giant red sculpture.

## FOOD



Looking for something to eat? Head over to [MacEwan Hall](#)! Open 7 days a week from 7am to 10pm, MacEwan Hall has Tim Horton's, A&W, Freshco Vietnamese and Starbucks, to name a few.

## CONTACT



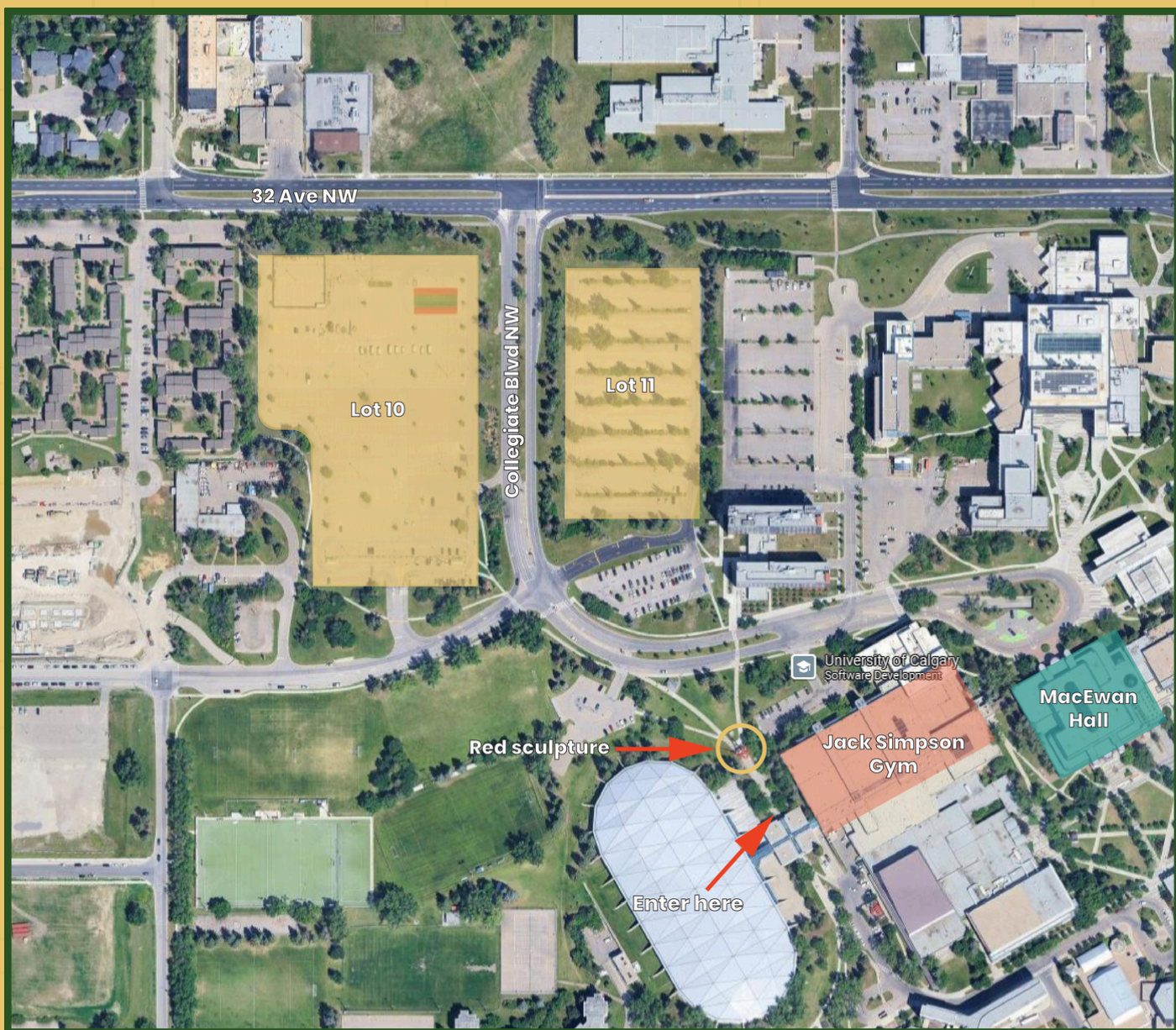
Email: [showdown@netballalberta.com](mailto:showdown@netballalberta.com)  
with any questions or concerns




#NetballAlberta50



# MAP






# RULES


This tournament will be played in line with the 2024 World Netball Rules, except as explicitly stated in the tournament rules, below.

There are two (2) tournament categories: Ladies and Mixed

## Tournament Rules

- 
- Up to 12 players can be registered for any team, these players must be listed in the player section on the team sheets that are submitted to the score desk each game.
  - Tactical Changes: teams can make up to 3 tactical changes during each half of the game by requesting a 'tactical change' to the umpire immediately after a goal is scored.
  - Players are permitted to wear medical and religious jewellery, safely taped, at players own risk.
  - Gloves are not permitted for players to wear.
  - A maximum of 3 self-identified men are allowed on the court at any one time, and must not play in the same circle (i.e., cannot play GK & GD or GS & GA for the same team).
  - A self-identified female player is allowed to register and play in both the mixed and ladies categories. However, she cannot play for more than one team within the same category – meaning she must choose one team in the ladies category and one team in the mixed category (if participating in both).
  - Similarly, self-identified male players – who can only participate in the mixed category – are not allowed to play for more than one mixed team. Once a male player is registered with a mixed team, he must remain with that team for the duration of the tournament.

(FYI- The tournament schedule will be set and event organizers cannot guarantee there will not be a conflict of games for those players registered in both mixed and ladies.)

- Forfeit: Teams are responsible for keeping track of the schedule and fielding the court in a timely manner. Teams who do not take the court within 1-minute of their game start time will forfeit the game. Teams who have any less than 5 of their originally registered players will also forfeit the game.
  - Teams are still welcome and encouraged to play a friendly match during this time if a forfeit has been declared.
- 



# STRUCTURE

## GAMES

### ROUND ROBIN GAMES ARE SCHEDULED INTO:

30-minute blocks  
Two 12-minute halves  
2 minutes between halves  
4 minutes between games

## PLAYOFFS

### PLAYOFF GAMES ARE SCHEDULED INTO:

1 hour blocks  
Four 12-minute halves  
2 minutes between quarters  
5 minutes at half time

## POINTS

### POINTS WILL BE AWARDED AS FOLLOWS:

Win = 3 points  
Tie = 2 points  
Loss = 1 point  
Forfeit = 0 points

## TIME KEEPING

Games will run on a central timer. This means that game time will **begin whether teams are ready to play or not**. Central time will not be held for tactical changes, injury, umpires time, or any other reason.

## ROUND ROBIN

In the case of a **tie in the standings** at the end of the round robin, tiebreakers will be in the following order: **total wins; goals scored; goal differential**.

## PLAYOFFS

At the end of a play off game, if **two teams** are tied, overtime will take place for **two minutes**. If a tie remains at the end of overtime, the game will continue, with the **next goal winning**.



# CHALLENGES

Think you've got the quickest draw or the smoothest ride? Saddle up and show us what you've got in our Stampede Challenges - two high-energy events open to all registered players!

Prizes will be awarded to the best in class - our sharpest shooter and slickest relay team - so come chase that golden buckle glory.

**Sign-up at the Memorabilia Table (limited spots available)!**

## SHOWDOWN COMPETITIONS

### QUICK DRAW SHOOTOUT

Enter solo and test your shooting speed, accuracy and nerve under pressure. It's just you, the ball, and the close - how fast can you land that final shot?

### STAMPEDE RELAY

Grab two teammates and take on this three-rider, full-speed relay that will test your footwork, passing, and finishing under fire. Only the sharpest team will rope in the win!

## TEAMS

### LADIES

Alberta Open  
Alberta U21  
Dream Team  
Legacy Squad  
MINC  
Outriders

### MIXED

Panthers  
Sisters United  
Wranglers

## UMPIRES

Jenny Hawker  
Jo Monaghan  
Charlotte Monaghan  
Julie Arnold  
Delight Takunda  
Debbie Ashworth  
Kate Titely

Lizzie Orridge  
Ren Gargan  
Dianne Le  
Erica Alabado  
Lucy Park  
Jai Narayan

>>> #stampedeshowdown <<<

# SCHEDULE

## SATURDAY

## COURT ONE

## COURT TWO

9:00 AM		Team Managers Meeting	
9:30 AM		Welcome	
9:45 AM		Warm Up	
10:00 AM Game 1	Teams	AB U21 Vs DREAM TEAM	LEGACY SQUAD Vs MINC
	Umpiring	Debbie & Charlotte	Kate & Lizzie
	Scoring	Sisters United	Wranglers
10:30 AM Game 2	Teams	SISTERS UNITED Vs WRANGLERS	AB OPEN Vs OUTRIDERS
	Umpiring	Debbie & Julie	Ren & Dianne
	Scoring	Dream Team	Legacy Squad
11:00 AM Game 3	Teams	SISTERS UNITED Vs PANTHERS	AB U21 Vs MINC
	Umpiring	Jenny & Julie	Lucy & Lizzie
	Scoring	Wranglers	Outriders
11:30 AM Game 4	Teams	PANTHERS Vs WRANGLERS	LEGACY SQUAD Vs OUTRIDERS
	Umpiring	Charlotte & Jenny	Debbie & Kate
	Scoring	AB U21	MINC
12:00 PM Lunch Break	SKILLS COMPETITION		
1:00 PM Game 5	Teams	WRANGLERS Vs SISTERS UNITED	AB OPEN Vs DREAM TEAM
	Umpiring	Julie & Ren	Debbie & Jai
	Scoring	Panthers	AB U21
1:30 PM Game 6	Teams	WRANGLERS Vs PANTHERS	AB U21 Vs OUTRIDERS
	Umpiring	Charlotte & Delight	Kate & Lizzie
	Scoring	Legacy Squad	MINC



SATURDAY

COURT ONE

COURT TWO

2:00 PM Game 7	Teams	LEGACY SQUAD Vs DREAM TEAM	AB OPEN Vs MINC
	Umpiring	Jai & Julie	Erika & Lucy
	Scoring	Sisters United	Panthers
2:30 PM Game 8	Teams	SISTERS UNITED Vs PANTHERS	
	Umpiring	Kate & Lucy	
	Scoring	Outriders	
3:00 PM Game 9	Teams	DREAM TEAM Vs OUTRIDERS	AB OPEN Vs AB U21
	Umpiring	Ren & Jai	Julie & Delight
	Scoring	MINC	Legacy Squad
3:30 PM Game 10	Teams	DREAM TEAM Vs MINC	LEGACY SQUAD Vs AB OPEN
	Umpiring	Delight & Jai	Debbie & Erika
	Scoring	Outriders	AB U21
4:00 PM Game 11	Teams	LEGACY SQUAD Vs AB U21	OUTRIDERS Vs MINC
	Umpiring	Debbie & Charlotte	Dianne & Lizzie
	Scoring	Dream Team	AB Open



SUNDAY

COURT ONE

COURT TWO

9:00 AM Game 1	Teams	SISTERS UNITED Vs WRANGLERS	
	Umpiring	TBD	
	Scoring	TBD	
9:30 AM Game 2	Teams	LADIES B (#1) Vs LADIES B (#2)	LADIES A (#1) Vs LADIES A (#2)
	Umpiring	TBD	TBD
	Scoring	Sisters United	Wranglers
10:00 AM Game 3	Teams	SISTERS UNITED Vs PANTERS	
	Umpiring	TBD	
	Scoring	TBD	
10:30 AM Game 4	Teams	LADIES B (#2) Vs LADIES B (#3)	LADIES A (#2) Vs LADIES A (#3)
	Umpiring	TBD	TBD
	Scoring	Sisters United	Panthers
11:00 AM Game 5	Teams	WRANGLERS Vs PANTHERS	
	Umpiring	TBD	
	Scoring	TBD	
11:30 AM Game 6	Teams	LADIES B (#1) Vs LADIES B (#3)	LADIES A (#1) Vs LADIES A (#3)
	Umpiring	TBD	TBD
	Scoring	Wranglers	Panthers
12:00 PM Lunch Break	PLAYOFFS BEGIN AT 12:45 PM GAMES WILL BE 1 HOUR LONG		
12:45 pm Ladies Semis	Teams	LADIES B - 2nd Vs LADIES B - 3rd	LADIES A - 2nd Vs LADIES A - 3rd
	Umpiring	TBD	TBD
	Scoring	TBD	TBD
1:45 PM Mixed Semis	Teams	MIXED - 2nd Vs MIXED - 3rd	
	Umpiring	TBD	
	Scoring	TBD	



SUNDAY

COURT ONE

COURT TWO

2:45 PM	NETBALL ALBERTA END OF SEASON AWARDS CEREMONY		
3:30 PM Ladies Finals	Teams	LADIES B - 1st Vs LADIES B - SEMI WINNER	LADIES A - 1st Vs LADIES A - SEMI WINNER
	Umpiring	TBD	TBD
	Scoring	TBD	TBD
4:30 PM Mixed Finals	Teams	MIXED - 1st Vs MIXED - SEMI WINNER	
	Umpiring	TBD	
	Scoring	TBD	



SCAN FOR UP TO DATE STANDINGS AND SCHEDULE



ALSO AVAILABLE ON YOUR TEAMLINKT APP!

# THINGS TO DO

## STAMPEDE



Calgary Stampede runs from July 4 to July 13 at the Calgary Stampede grounds. Known as "The Greatest Outdoor Show on Earth", the 10-day event features a rodeo, a parade, midway attractions, live shows, concerts, agricultural competitions, chuckwagon racing and some of the craziest carnival food known. Be sure to keep your eyes open for free pancake breakfasts hosted across the city.

## CALGARY



Wilder Institute/Calgary Zoo  
Calgary Tower  
Princes Island Park  
Heritage Park  
WinSport  
Callaway Park  
Studio Bell  
TELUS Spark Science Centre  
Cold Garden Brewing  
Cabin Brewing  
Banded Peak Brewing  
Annex Ale Project

## DAY TRIPS



### Drumheller

- Royal Tyrell Museum

### Canmore

- Canmore Nordic Centre
- Yamnuska Wolfdog Sanctuary
- Canmore Art Guild
- Grizzly Paw Brewing Company
- Eclipse Coffee Roasters

### Banff

- Banff Gondola
- Cave and Basin
- Tunnel Mountain
- Whyte Museum
- Banff Centre
- Open Top Touring
- Bow Falls
- PARK Distillery

### Lake Louise

### Waterton National Park